

AZO pipe clamp for pneumatic pipelines

**Easy and quick
installation**

**Electrically
conductive**

**Rust-resistant
connection**

Preferred applications

The AZO pipe and connection clamp is used for connecting pipes, pipe branches, pipe elbows, T-pieces etc. At the same time it serves for ceiling and wall fastening of pipelines. It can be used with vacuum as well as pressure pneumatic systems.

Special advantages

- Simple and fast assembly
- Simultaneous connection and mounting
- Clearly laid out pipe routing in an integrated system
- Can be used with commonly available pipes for vacuum and pneumatic pressure systems
- Electrically conductive and stainless connections
- Absolutely pressure proof up to 5 bar with axial protection

THE INNOVATION



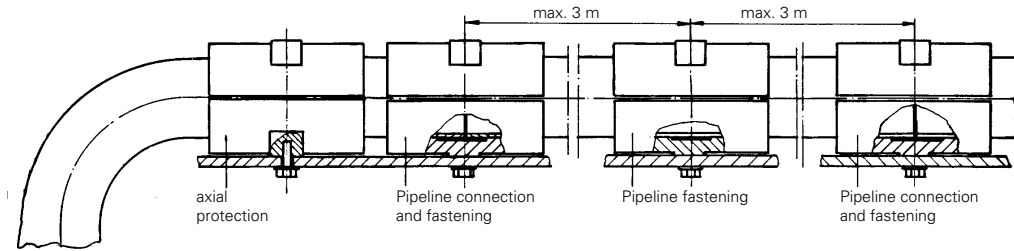
Design

The AZO pipe and connection clamp consists of 2 halves of high-grade aluminium die casting, one polyesther seal ring (TPU in accordance with pertinent food regulation 21 CFR 177.1680 of the FDA) as well as the required nuts and bolts of stainless or mild steel.

Assembly

Deburr both pipe ends and remove the chips from the pipe. With coated steel pipes the pipe ends must be uninsulated at the contact area of the pipe clamp to ensure an electrically conductive connection. When using absolute pressures above 2.5 bar, the pipeline must be additionally protected by means of axial mountings.

Applications of pipe clamps

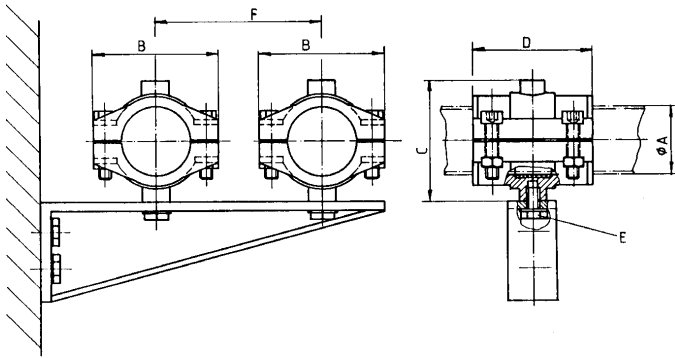


Technical data

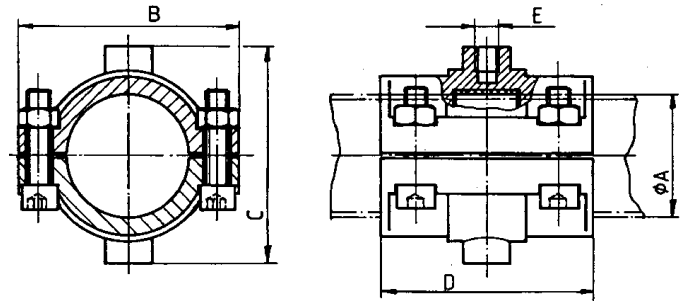
The maximum permissible absolute conveying pressure for pipelines without axial protection is 0 – 2.5 bar. For pipelines with axial protection, the maximum permissible absolute conveying pressure is 0 – 5 bar. The allowable dimensional deviation of the pipes for the pipe clamp NW 38 is +/- 0.2 mm, for all other NWs +/- 0.3 mm.

Dimensions:

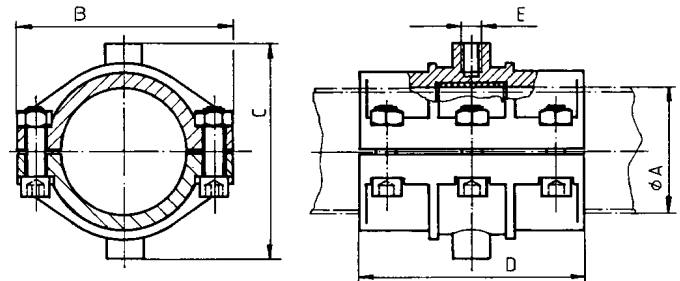
Pipeline fastening NW 38; 50; 65



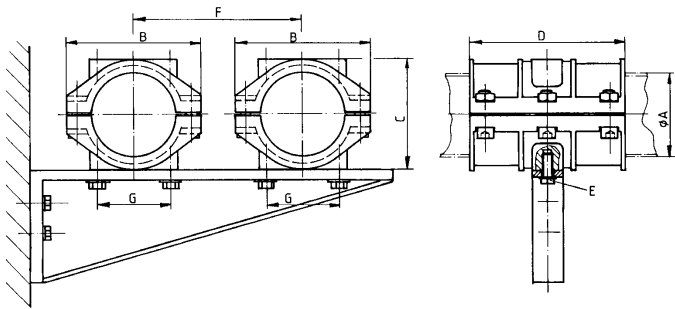
Pipe clamp NW 38 and NW 50



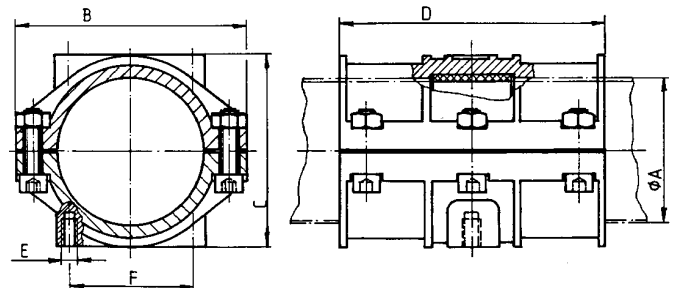
Pipe clamp NW 65



Pipeline fastening NW 80; 100; 128



Pipe clamp NW 80 and NW 100



ØA	B	C	D	E	F	G
38	75	75	75	M 8	80	
50	95	90	90	M10	100	
65	115	111	120	M10	120	
80	130	109	150	M10	140	70
100	150	129	180	M10	160	80
128	185	167	210	M12	200	80

ØA	B	C	D	E	F	Net weight in kg
38	75	75	75	M 8		0,4
50	95	90	90	M10		0,7
65	115	111	120	M10		1,1
80	130	109	150	M10	70	1,6
100	150	129	180	M10	80	2,2
128	185	167	210	M12	80	